



*Preliminary Brochure*

STONE  VALLEY OAKS

SUMMERHILL HOMES™

COMMUNITIES OF DISTINCTION

# Community Story

*You have reached a new pinnacle of living. Where elegance, prestige, and an uncompromised level of luxury is your reward. With the elevated status you've achieved, you are finally able to fully appreciate the beauty of the world.*

*A celebration of unmatched style, grace, and beauty, Stone Valley Oaks beckons its residents to take a moment and appreciate its exquisite charm and distinctive beauty. Boasting a paramount Alamo location, this neighborhood puts you within reach of the Bay Area's finest shops and restaurants, allowing you to live life at its best.*

*This enclave of estate homes offers sprawling homesites ranging up to one acre with awe-inspiring views and an abundance of open space. The attention to detail that you've come to expect from Summer Hill Homes can be found in each and every home at Stone Valley Oaks.*

*You have finally arrived.*

STONE  VALLEY OAKS



# Residence One



*Plan 1, Elevation a*



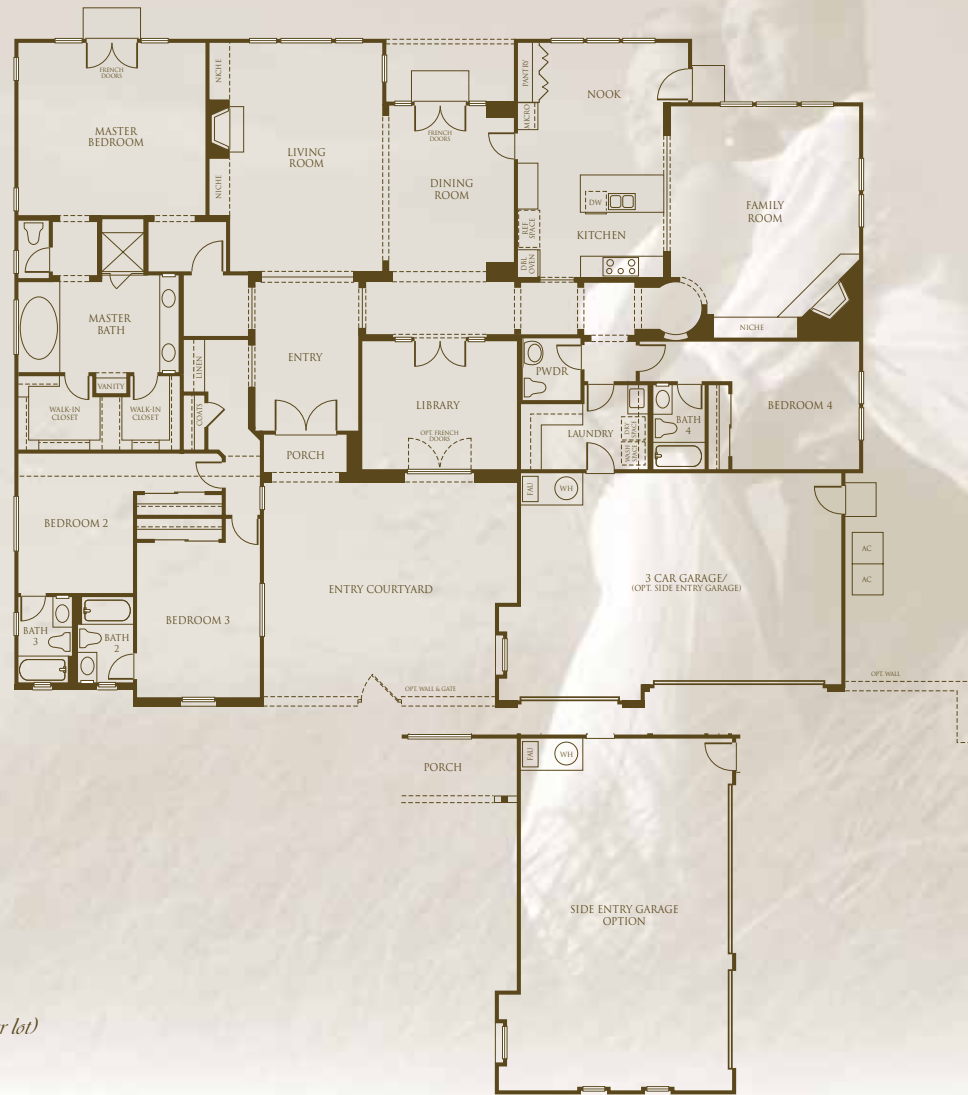
*Plan 1, Elevation c*

*Artists' conception*

PRELIMINARY BROCHURE. Ask your Community Sales Manager for more information on the choices available for each plan. SummerHill Homes reserves the right to alter floorplans, specifications, features, prices, and other information described in this brochure without notice or obligation. All room dimensions and home sizes are approximate and may vary depending upon elevation. Windows, room sizes, and layouts are subject to change per elevation or flex option. Certain items are artists' conceptions and are either optional or not available such as architectural garage doors and low walls. Optional built-ins are per architectural drawings, not as represented in models. Ask your Community Sales Manager for details. All information contained in this brochure is qualified in its entirety by the Seller's Information Statement, which is incorporated herein by this reference. 4/03



# Residence One



*Approximately 3653 square feet*

*4 Bedrooms*

*4½ Bathrooms*

*Library*

*3-Car garage*

*Optional garden wall & gate (per lot)*



# Residence Two



*Plan 2, Elevation a*



*Plan 2, Elevation b  
(modified plan)*



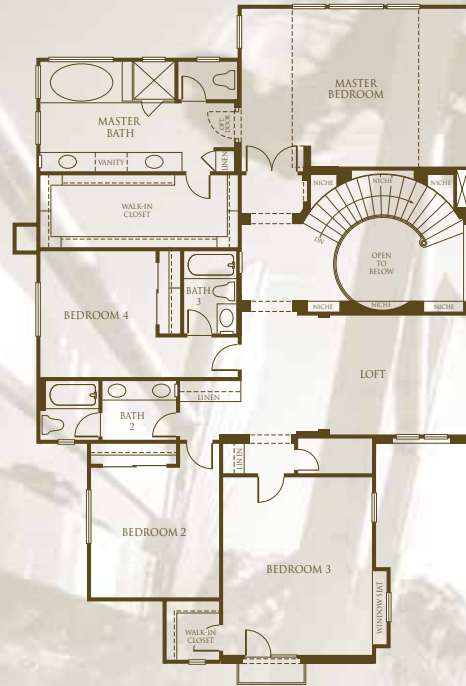
*Plan 2, Elevation f*

*Artists' conception*

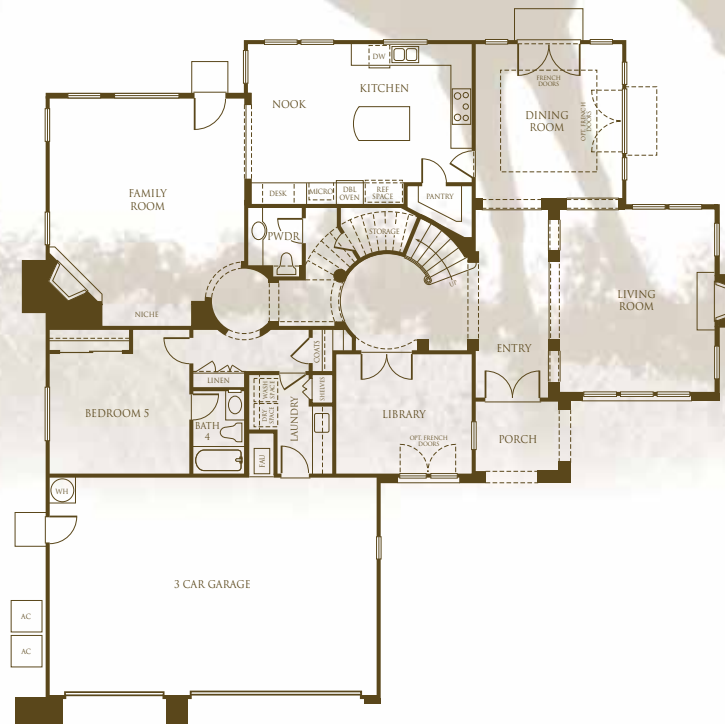
PRELIMINARY BROCHURE. Ask your Community Sales Manager for more information on the choices available for each plan. SummerHill Homes reserves the right to alter floorplans, specifications, features, prices, and other information described in this brochure without notice or obligation. All room dimensions and home sizes are approximate and may vary depending upon elevation. Windows, room sizes, and layouts are subject to change per elevation or flex option. Certain items are artists' conceptions and are either optional or not available such as architectural garage doors and low walls. Optional built-ins are per architectural drawings, not as represented in models. Ask your Community Sales Manager for details. All information contained in this brochure is qualified in its entirety by the Seller's Information Statement, which is incorporated herein by this reference. 4/03



# Residence Two



SECOND FLOOR



FIRST FLOOR

Approximately 4,254 square feet

5 Bedrooms

4½ Bathrooms

Library

Loft

3-Car garage







# Residence Three



*Plan 3, Elevation a  
(model)*



*Plan 3, Elevation b*



*Plan 3, Elevation d*

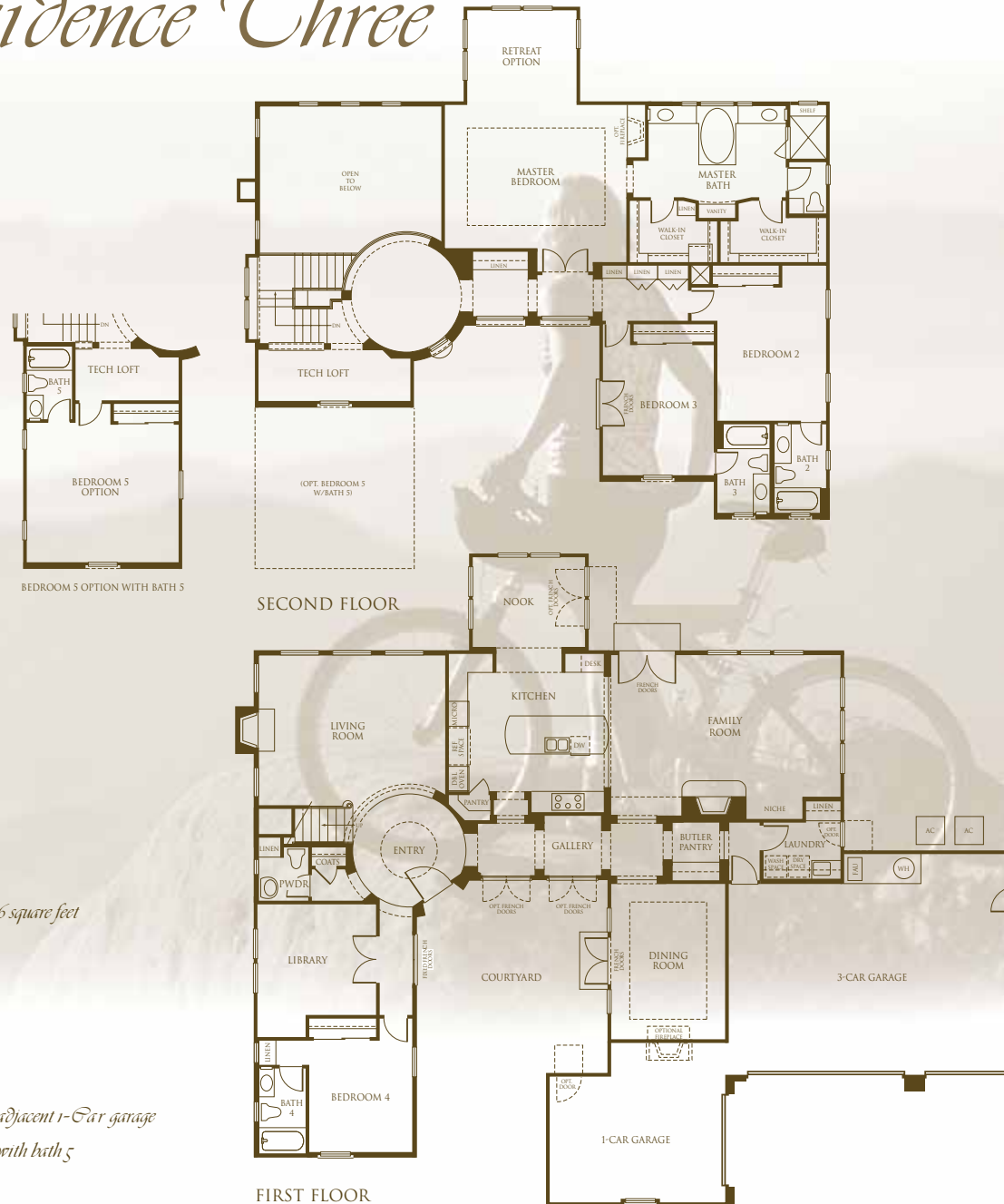
*Artists' conception*

PRELIMINARY BROCHURE. Ask your Community Sales Manager for more information on the choices available for each plan. SummerHill Homes reserves the right to alter floorplans, specifications, features, prices, and other information described in this brochure without notice or obligation. All room dimensions and home sizes are approximate and may vary depending upon elevation. Windows, room sizes, and layouts are subject to change per elevation or flex option. Certain items are artists' conceptions and are either optional or not available such as architectural garage doors and low walls. Optional built-ins are per architectural drawings, not as represented in models. Ask your Community Sales Manager for details. All information contained in this brochure is qualified in its entirety by the Seller's Information Statement, which is incorporated herein by this reference. 4/03





# Residence Three



*Approximately 4,206 square feet*

*4 Bedrooms*

*4 1/2 Bathrooms*

*Retreat*

*Library*

*Tech loft*

*3-Car garage with adjacent 1-Car garage*

*Optional bedroom 5 with bath 5*



# Residence Four



*Plan 4, Elevation b*



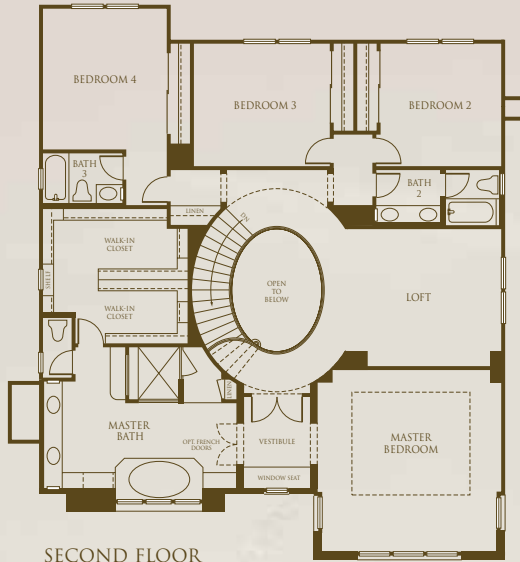
*Plan 4, Elevation d*

*Artists' conception*

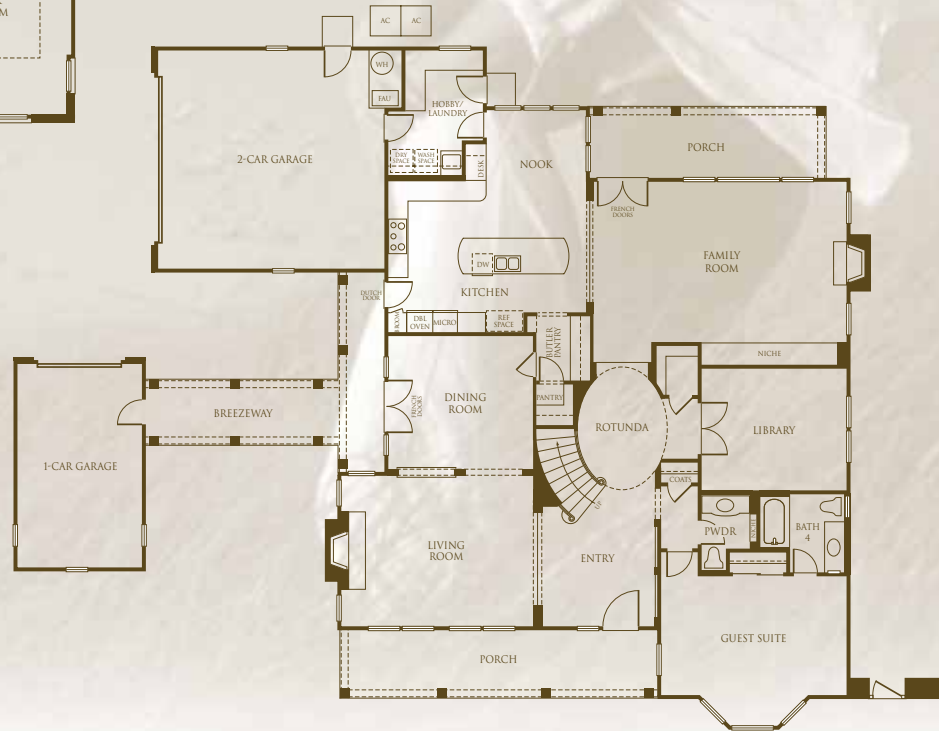
PRELIMINARY BROCHURE. Ask your Community Sales Manager for more information on the choices available for each plan. SummerHill Homes reserves the right to alter floorplans, specifications, features, prices, and other information described in this brochure without notice or obligation. All room dimensions and home sizes are approximate and may vary depending upon elevation. Windows, room sizes, and layouts are subject to change per elevation or flex option. Certain items are artists' conceptions and are either optional or not available such as architectural garage doors and low walls. Optional built-ins are per architectural drawings, not as represented in models. Ask your Community Sales Manager for details. All information contained in this brochure is qualified in its entirety by the Seller's Information Statement, which is incorporated herein by this reference. 4/03



# Residence Four



SECOND FLOOR



FIRST FLOOR

*Approximately 4,528 square feet*

*5 Bedrooms*

*4 1/2 Bathrooms*

*Library*

*Loft*

*2-Car garage with detached 1-Car garage (per lot)*





# Residence Five



*Plan 5, Elevation a*



*Plan 5, Elevation b  
(model)*

*Artists' conception*

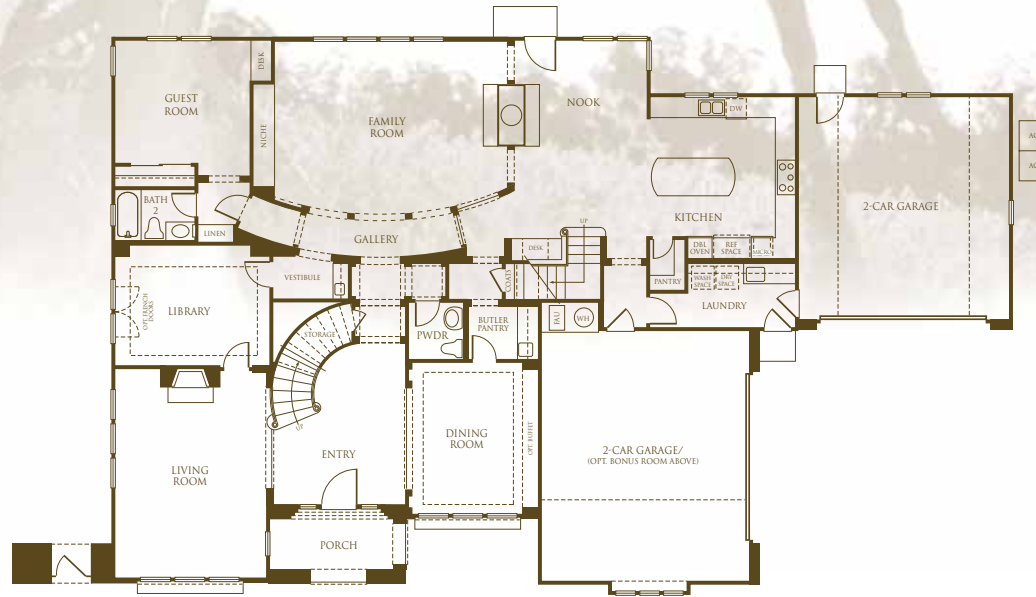
PRELIMINARY BROCHURE. Ask your Community Sales Manager for more information on the choices available for each plan. SummerHill Homes reserves the right to alter floorplans, specifications, features, prices, and other information described in this brochure without notice or obligation. All room dimensions and home sizes are approximate and may vary depending upon elevation. Windows, room sizes, and layouts are subject to change per elevation or flex option. Certain items are artists' conceptions and are either optional or not available such as architectural garage doors and low walls. Optional built-ins are per architectural drawings, not as represented in models. Ask your Community Sales Manager for details. All information contained in this brochure is qualified in its entirety by the Seller's Information Statement, which is incorporated herein by this reference. 4/03



# Residence Five



SECOND FLOOR



FIRST FLOOR

Approximately 5,214 square feet

5 Bedrooms

5 1/2 Bathrooms

Library

Two 2-Car garages (per lot)

Optional bonus room above garage



# Residence Six



*Plan 6, Elevation h*

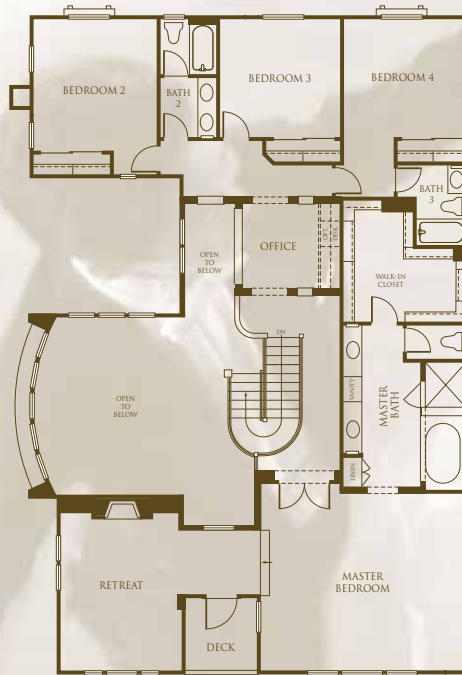
*Artists' conception*

PRELIMINARY BROCHURE. Ask your Community Sales Manager for more information on the choices available for each plan. SummerHill Homes reserves the right to alter floorplans, specifications, features, prices, and other information described in this brochure without notice or obligation. All room dimensions and home sizes are approximate and may vary depending upon elevation. Windows, room sizes, and layouts are subject to change per elevation or flex option. Certain items are artists' conceptions and are either optional or not available such as architectural garage doors and low walls. Optional built-ins are per architectural drawings, not as represented in models. Ask your Community Sales Manager for details. All information contained in this brochure is qualified in its entirety by the Seller's Information Statement, which is incorporated herein by this reference. 4/03

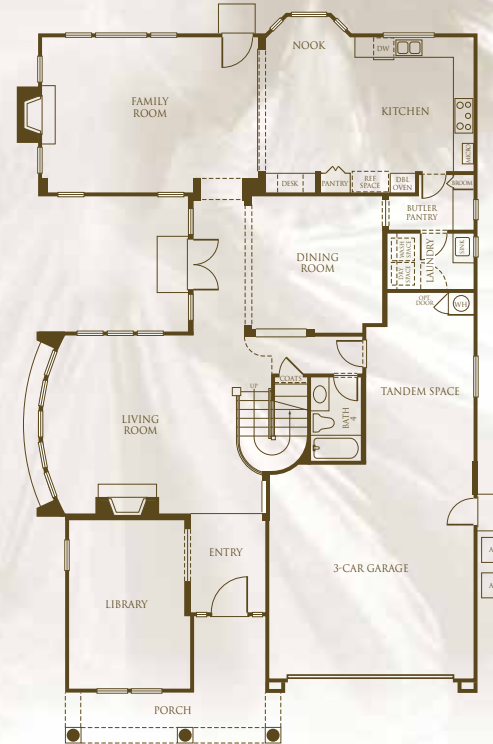




# Residence Six



SECOND FLOOR



FIRST FLOOR

*Approximately 3,829 square feet*

*4 Bedrooms*

*4 Bathrooms*

*Retreat*

*Library*

*Office*

*3-Car garage*



# Residence Seven



*Plan 7 Elevation b, with stone*  
*(Not shown, Plan 7, Elevation b, with brick)*

*Artists' conception*

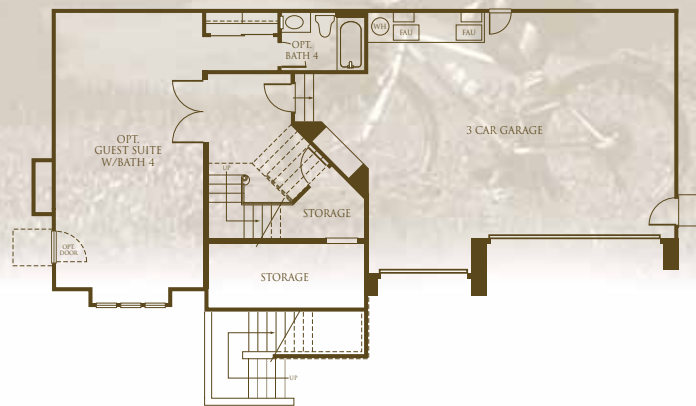
PRELIMINARY BROCHURE. Ask your Community Sales Manager for more information on the choices available for each plan. SummerHill Homes reserves the right to alter floorplans, specifications, features, prices, and other information described in this brochure without notice or obligation. All room dimensions and home sizes are approximate and may vary depending upon elevation. Windows, room sizes, and layouts are subject to change per elevation or flex option. Certain items are artists' conceptions and are either optional or not available such as architectural garage doors and low walls. Optional built-ins are per architectural drawings, not as represented in models. Ask your Community Sales Manager for details. All information contained in this brochure is qualified in its entirety by the Seller's Information Statement, which is incorporated herein by this reference. 4/03



# Residence Seven



SECOND FLOOR



FIRST FLOOR

*Approximately 3,879 square feet*

*4 Bedrooms*

*4 1/2 Bathrooms*

*Optional guest suite with bath 4*

*3-Car garage*





# Features

## A SPECIAL PLACE TO LIVE

*Stone Valley Oaks' spacious homesites of up to one acre are set along meandering streets and courts, tucked away in the picturesque foothills of Alamo's countryside. Most homesites are amidst open-space hillsides with beautiful Heritage oak trees and trail access.*

Stone Valley Oaks is just minutes from Highway 680 providing convenient access to employment from Walnut Creek to Pleasanton and the Silicon Valley. Nearby Highway 24 also offers convenient access to San Francisco and Oakland either by Highway or BART.

Just minutes from historic downtown Danville with quaint shops and restaurants, and close to Walnut Creek for fine dining, arts, and shopping at Broadway Plaza featuring Nordstrom, Macy's, and other well known retailers.

Large homesites for endless landscaping possibilities, pools, gardens, family activities, and space to simply stretch out and live.

## DISTINCTIVELY DIFFERENT EXTERIORS

*Distinctive architecture reflecting the best of the old and new from Traditional-style architecture to Monterey Revival and Craftsman. Rich detailing includes beautiful brick and stone veneers. Inviting front porches, courtyards, turrets, and balconies are among the many features that give the neighborhood its long-lasting appeal.*

Shake, slate, or villa-style concrete tile roof or 40-year composition shingle roof, per plan

Easy-maintenance stucco or non-combustible James Hardie™ lap or shingle style siding with a 50-year limited, transferable warranty, per plan

Beautiful stone and brick veneers, per plan

8-foot, solid maple, wood-painted entryway doors

Elegant, oil-rubbed bronze Baldwin™ entry door hardware

Redwood side and rear yard fences with gate. View fencing, per homesite

Broom-finished, integral color concrete driveways, walks, and porches, per plan

## ELEGANTLY APPOINTED LIVING AREAS

*Your introduction to a Stone Valley Oaks home begins as you step inside the elegant entryway. The spacious floorplan which lies ahead has been thoughtfully designed with volume ceilings in just the right places, and tasteful details that express your sense of style. We have embellished the homes at Stone Valley Oaks with upgraded features that will provide years of enjoyment—and a feeling of pride every time you come home.*

Huge gourmet kitchens and adjoining family rooms include a center island, ample custom cabinets, spacious breakfast nooks, and morning rooms with lots of windows, per plan

Non-wood-burning gas fireplace in living room and family room with a pre-cast mantel and surround, per plan

All Kohler™ bath fixtures including sinks, tub, toilet, and beautiful "Revival" faucets in polished chrome with brass accents

Elegant, hardwood plank flooring in entryway and kitchen

Ceramic floor tile in bathroom hard-surface areas and laundry area, per plan

Designer selected, wall-to-wall carpet with Scotchguard™ protection

Beautiful designer light fixtures and chandeliers, per plan

Recessed down lighting in main living areas

Media niche in family room ready for customization

Hardwood stair rails with white, painted balusters and tread ends

## THE DREAMER'S GOURMET KITCHEN

*The spacious, well-planned kitchens show a definite understanding of household and guest interaction. With lots of cabinets, a huge center island for casual entertaining, and an adjoining breakfast nook or morning room—there's plenty of room for everyone to feel welcome.*

Custom built, raised panel maple cabinetry with oversized crown molding and white vinyl interiors, concealed hinges, and roller drawer glides

Beautiful KitchenAid™ white or black appliances

30" double, self-cleaning oven, with upper convection oven

36" glass 5-burner gas cooktop with sealed burners

Separate built-in microwave oven

Deluxe, four-cycle dishwasher with stainless steel interior and whisper quiet sound-reduction system

36" Broan™ vented hood with 250–400 CFM, per plan

Kohler™ gourmet pull-out white kitchen faucet

Kohler™ "Executive Chef," double-compartment, cast iron, white enamel sink

Granite tile, 12" x 12" kitchen countertops with full backsplash behind cooktop

Recessed overhead down lighting and convenient under-cabinet lighting



## HIDEAWAY FROM IT ALL—MASTER SUITE

*Someone has been listening to you after all. More than just a master bedroom, this spacious getaway is truly a private retreat—with a quiet reading area or romantic fireplace, depending upon the plan you choose. A few lit candles and soft music, and you are miles away from the trials of everyday life.*

Luxurious master suite with spacious bedroom, sitting area, and fireplace, per plan  
Beautiful Kohler™ fixtures and faucets  
Fully tiled oversized shower with 6" ceramic tile surround and 38" glass enclosure  
Beautiful Kohler™ deep, acrylic oval soaking tub with ceramic tile surround  
Ceramic tile, 6" x 6" vanity with dual china sinks  
Full height beveled mirrors over vanity with recessed down lighting, per plan  
Ceramic floor tile, 12" x 12," in master bath water closet  
Large walk-in closet with mirrored closet door  
Beveled mirror medicine cabinet

## PRACTICAL SECONDARY BATHS

*Compartmentalized or private secondary baths are convenient for a house full of kids or guests. Stylish Kohler™ “Revival” fixtures and ceramic tile add a touch of class.*

Ceramic tile, 4" x 4" countertop with single or dual Kohler™ china sinks, per plan  
Kohler™ faucets  
Kohler™ cast iron enamel tub with 4" ceramic tile surround  
Ceramic floor tile, 8"x 8," in secondary tub area  
Recessed medicine cabinet

## MORE EXTRAORDINARY FEATURES INCLUDED

*Stone Valley Oaks' homes include the technology and convenient features that busy lives require.*

Smoke detectors wired throughout house  
Cable television outlets in family room, all bedrooms, libraries, dens, lofts, tech centers, and bonus rooms  
Category 5 telephone wiring, Home-run lines and outlets in kitchen, all bedrooms, libraries, dens, lofts, tech centers, and bonus rooms  
Spacious laundry rooms with gas dryer hookup, maple raised panel cabinets, 4" ceramic tile countertops, and deep utility sink  
Cast iron waste lines  
Painted, 6-panel interior “Colonist” doors with polished brass Schlage™ door hardware  
Steel, raised panel, insulated garage doors with automatic garage door opener with two remotes  
Copper water pipes  
Hot water loop with circulating pump to whole house

## ENERGY-SAVING FEATURES

*Thoughtfully crafted to meet today's energy efficient needs.*

Dual-pane, vinyl windows  
Dual-zone central air conditioning, and high efficiency forced air gas furnace with electronic ignition and energy efficient electronic set-back thermostat  
Insulation meets California State Energy Code  
75-gallon, quick recovery gas water heater  
Water saving shower heads and 1.6-gallon toilets

## CUSTOMER CHOICES™ OPTIONS PROGRAM

*Available at Stone Valley Oaks, an experienced design center coordinator at our on-site Design Center will work with you to personalize your new Stone Valley Oaks home.*

Separate guest Casita with central air conditioning, wet bar, under counter refrigerator, microwave oven, and fireplace, per homesite  
Garden wall with gate, courtyard patio, patio and porch, stone or tile veneers, per homesite  
Selection of beautiful carpets, tiles, marble, granite slab floors, countertops, and bath surrounds  
Gourmet kitchen appliances, including KitchenAid™ “Architectural Series” package, Wolf Gourmet™ cooktop and exhaust hood, Sub-Zero™ built-in refrigerators, wine storage/refrigerator and warming drawers  
Custom kitchen cabinet styles and finishes  
Security, intercom, entertainment, OnQ™ wiring system  
Central vacuum system  
Custom designed media niche cabinetry, per plan  
Architecturally distinctive stair railing, per plan  
Beautifully stained architectural entryway doors  
Interior French doors and Andersen™ exterior French doors  
Garage door with windows  
Baldwin™ interior door hardware selections  
Kohler™ jetted tub in master bathroom  
Kohler™ designer plumbing fixtures in a variety of finishes  
Fully cased windows and millwork package

*... And, much more. Contact the Stone Valley Oaks Community Sales Manager for details of which optional features are available. Certain homes at Stone Valley Oaks have been beautifully pre-selected with many options and upgrades.*



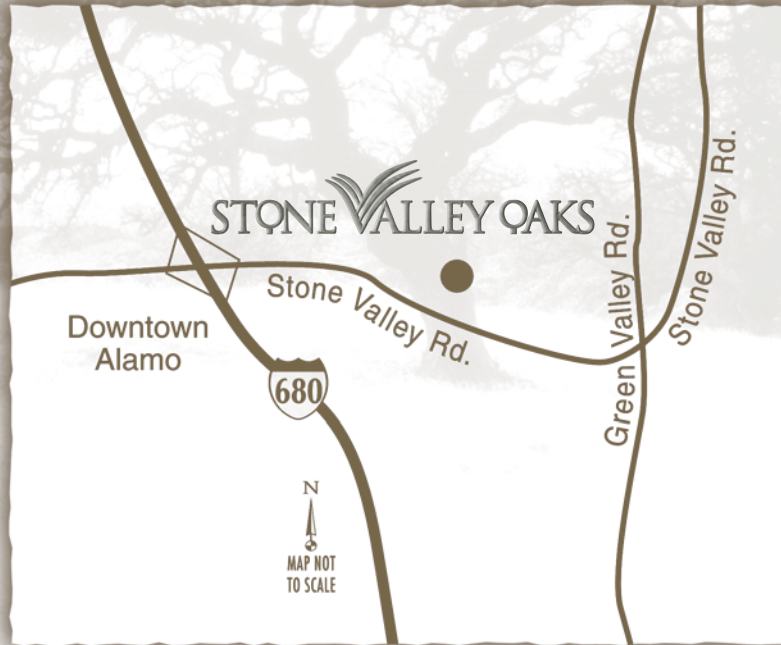
# SummerHill Homes

*SummerHill Homes has created a tradition of well-planned neighborhoods with dramatic architectural styling built in superior settings throughout the San Francisco Bay Area.*

*SummerHill's new communities are distinguished by their rich character and exceptional attention to detail, lending to the enduring quality of all its homes.*

*For over 25 years, SummerHill Homes' new communities have earned homeowner satisfaction and significant industry recognition, including several Best in American Living Awards from the National Association of Home Builders, numerous Gold Nugget Awards at the Pacific Coast Builders' Conference, and several features in national magazines including Builder, Professional Builder, and Better Homes and Gardens.*





*Stone Valley Oaks*  
*131 Pheasant Court*  
*Alamo, CA 94507*  
*(925) 838-4230 fax: (925) 838-4235*

**SUMMERHILL HOMES™**  
COMMUNITIES OF DISTINCTION

